

Throughout this document 'Devon' refers to the administrative area of Devon County Council and 'Torbay' refers to the administrative area of Torbay Council. Italic hyperlinks will open the interactive Devon County Council Environment Viewer.

Economic Prosperity, Health and Wellbeing

Devon and Torbay are widely celebrated for the great beauty and diversity of their landscapes, historic settlements, ancient buildings and archaeological sites. The historic environment is valued by residents and visitors as a key part of Devon and Torbay's cultural identity; 75% of adults in the South West visit an

historic site each yearⁱ and over half of all visitors to the UK visit at least one heritage site during their trip, meaning the historic environment is worth £7.4 billion to the national economy and provides 195,000 jobsⁱⁱ. Those working or volunteering in the preservation and renewal of the historic environment in Devon and Torbay may benefit from increased health and wellbeing through an active lifestyle. The Heritage Lottery Fund found that volunteering associated with the historic environment can result in decreased mortality and improved life-satisfactionⁱⁱⁱ.

Historic Assets

There are over 112,900 [historic assets](#) on Devon's Historic Environment Record, most of which do not have statutory protection. Nevertheless, a large amount of buildings, sites and monuments are given special protection by law. These assets, and those that are on the Heritage at Risk Register, are shown in Table 1 and in Map 1^{iv}.

The number of assets on the Heritage at Risk Register in the South West continues to fall. This is true for Devon and Torbay other than the number of buildings registered as 'at risk' in Devon, which is rising. None of Devon's 10 protected wreck sites is on the register.



Haldon Belvedere (also known as Lawrence Castle), a Grade II* triangular tower, stands at a prominent position of the hills overlooking the Exe Estuary. (Credit: Pauline Burden)



Okehampton Castle is a medieval motte and bailey castle built between 1068 and 1086. It is now a Grade 1 listed building.

Considerable progress has been made in Torbay at reducing the number of conservation areas at risk. Conservation areas are removed from the Register once plans have been put in place to address the issues that led to the conservation area being at risk, and once positive progress is being made.

Common reasons for the 'at risk' status of buildings include vacant/unoccupied buildings without a use, and neglect. Arable ploughing and plant growth are the two most frequent reasons for scheduled ancient monuments being classed as 'at risk'.

Table 1 – Designated Historic Assets and those at Risk

		<u>Listed Buildings</u> (inc. places of worship)	<u>Scheduled Monuments</u>	<u>Registered Parks and Gardens</u>	<u>Protected Wrecks</u>	<u>World Heritage Sites</u>	<u>Conservation Areas</u>
Torbay ^v		865	13	6	1	0	24
At Risk in Torbay	2009 ^{vi}	2	5	0	0	n/a	10
	2011 ^{vii}	3	4	2	0	n/a	3
	2013 ^{viii}	3	4	2	0	n/a	2
	2015 ^{ix}	4	1	3	0	n/a	1
	2016 ^x	4	2	3	0	n/a	1
	2018	4	2	3	0	n/a	1
Devon ^{xi}		16870	1016	37	7	2	427
At Risk in Devon	2009 ^{xii}	19	450	3	0	n/a	14
	2011 ^{xiii}	26	453	3	0	n/a	22
	2013 ^{xiv}	37	440	0	0	n/a	18
	2015 ^{xv}	58	348	3	0	n/a	10
	2016 ^{xvi}	81	333	3	0	n/a	14
	2018	75	310	3	0	n/a	8

World Heritage Sites

World Heritage Sites (WHS) are examples of cultural and natural heritage considered to be of outstanding value to humanity. There are 1092 WHSs globally, with 31 sited in the UK and overseas territories, 26 of which are cultural. Devon is home to two of these, which puts the *Devon and East Devon Coast* and the *Cornwall and West Devon Mining Landscape* alongside the *Great Barrier Reef* and the *Pyramid Fields from Giza to Dahshur* in Egypt.

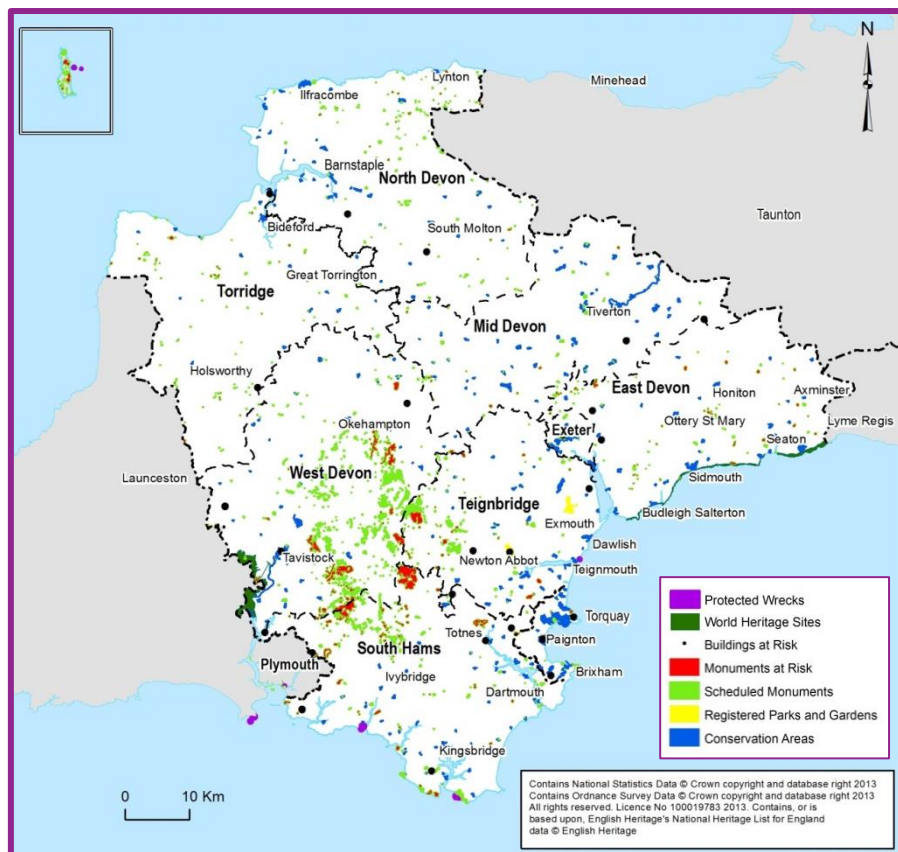
Dorset and East Devon Coast

The area covers 2,550 hectares and became a World Heritage Site in 2001. The cliff contains a vast array of rock formations from Triassic, Jurassic, Cretaceous and Quaternary periods; a total of 185 million years of the earth's history. It was classified due to its importance as a fossil site and features which have aided the study of earth sciences for over 300 years^{xvii}.

Cornwall and West Devon Mining Landscape

The 'Tamar Valley Mining District with Tavistock' is partly within Devon. The landscape of West Devon was transformed in the 18th and early 19th centuries as a result of copper and tin mining.

Its deep underground mines, engine houses, foundries, smallholdings, ports and harbours enabled the region to produce two-thirds of the world's supply of copper. The substantial remains are a testimony to the contribution Cornwall and West Devon made to the Industrial Revolution in Britain and to the influence the area had on the mining world. Cornwall and West Devon were the heartland from which mining technology rapidly spread^{xviii}.



Map 1 – Historic Assets

-
- ⁱ English Heritage (2012) *Heritage Counts 2012 South West*. English Heritage. Available at: <http://hc.english-heritage.org.uk/content/pub/2012/hc-2012-south-west.pdf> (Accessed 21/08/13)
- ⁱⁱ English Heritage (2013) *Economic Value of the Historic Environment*. English Heritage. Available at: <http://www.english-heritage.org.uk/professional/research/social-and-economic-research/value-of-historic-environment/economic-value/> (Accessed 01/05/2013)
- ⁱⁱⁱ Heritage Lottery Fund (2012) *Values and benefits of heritage: A research review by HLF Strategy & Business Development Department*. Heritage Lottery Fund. Available at: <http://www.hlf.org.uk/873A38E9-5DEF-41C0-9C62-EF24B673DC18/FinalDownload/DownloadId-3F62F2E68E90593E060FA0692FEF41DC/873A38E9-5DEF-41C0-9C62-EF24B673DC18/aboutus/howwework/Documents/ValuesandBenefits2012.pdf> (Accessed 01/05/2013)
- ^{iv} Devon County Council (2013) *Data supplied by Devon County Council's Historic Environment Team*
- ^v Torbay Council (2015) *Data supplied by Torbay Council's Spatial Planning Team*
- ^{vi} English Heritage(2009) *Heritage at Risk Register 2009, South West*. English Heritage. Available at http://www.english-heritage.org.uk/publications/HAR_Register_South_West_2009/southwest-2009-har-register.pdf
- ^{vii} English Heritage (2011) *Heritage at Risk Register 2011, South West*. English Heritage. Available at <http://www.english-heritage.org.uk/publications/har-2011-registers/acc-sw-HAR-register-2011.pdf>
- ^{viii} English Heritage (2013) *Heritage at Risk Register 2013, South West*. English Heritage. Available at: <http://www.english-heritage.org.uk/publications/har-2013-registers/sw-HAR-register-2013.pdf>
- ^{ix} Historic England (2015) *Heritage at Risk South West*, <https://content.historicengland.org.uk/images-books/publications/har-2015-registers/sw-har-register2015.pdf/>
- ^x Historic England (2016), *Heritage at Risk Register*. Available at: <https://historicengland.org.uk/advice/heritage-at-risk/search-register/>
- ^{xi} Devon County Council (2013) *Data supplied by Devon County Council's Historic Environment Team*
- ^{xii} English Heritage(2009) *Heritage at Risk Register 2009, South West*. English Heritage. Available at http://www.english-heritage.org.uk/publications/HAR_Register_South_West_2009/southwest-2009-har-register.pdf
- ^{xiii} United Nations Educational Scientific Cultural Organisation (Unknown), *Dorset and East Devon Coast Description*. Available at: <http://whc.unesco.org/en/list/1029/>
- ^{xiv} United Nations Educational Scientific Cultural Organisation (Unknown), *Dorset and East Devon Coast Description*. Available at: <http://whc.unesco.org/en/list/1215>
- ^{xv} Historic England (2016), *Heritage at Risk Register*. Available at: <https://historicengland.org.uk/advice/heritage-at-risk/search-register/>
- ^{xvi} English Heritage (2011) *Heritage at Risk Regsiter 2011, South West*. English Heritage. Available at <http://www.english-heritage.org.uk/publications/har-2011-registers/acc-sw-HAR-register-2011.pdf>

^{xiv} English Heritage (2013) *Heritage at Risk Register 2013, South West*. English Heritage. Available at: <http://www.english-heritage.org.uk/publications/har-2013-registers/sw-HAR-register-2013.pdf>

^{xv} Historic England (2015) *Heritage at Risk South West*, <https://content.historicengland.org.uk/images-books/publications/har-2015-registers/sw-har-register2015.pdf/>

^{xvi} Historic England (2016), *Heritage at Risk Register*. Available at: <https://historicengland.org.uk/advice/heritage-at-risk/search-register/>

^{xvii} United Nations Educational Scientific Cultural Organisation (Unknown), *Dorset and East Devon Coast Description*. Available at: <http://whc.unesco.org/en/list/1029/>

^{xviii} United Nations Educational Scientific Cultural Organisation (Unknown), *Dorset and East Devon Coast Description*. Available at: <http://whc.unesco.org/en/list/1215>

^{xvii} Historic England (2016), *Heritage at Risk Register*. Available at: <https://historicengland.org.uk/advice/heritage-at-risk/search-register/>